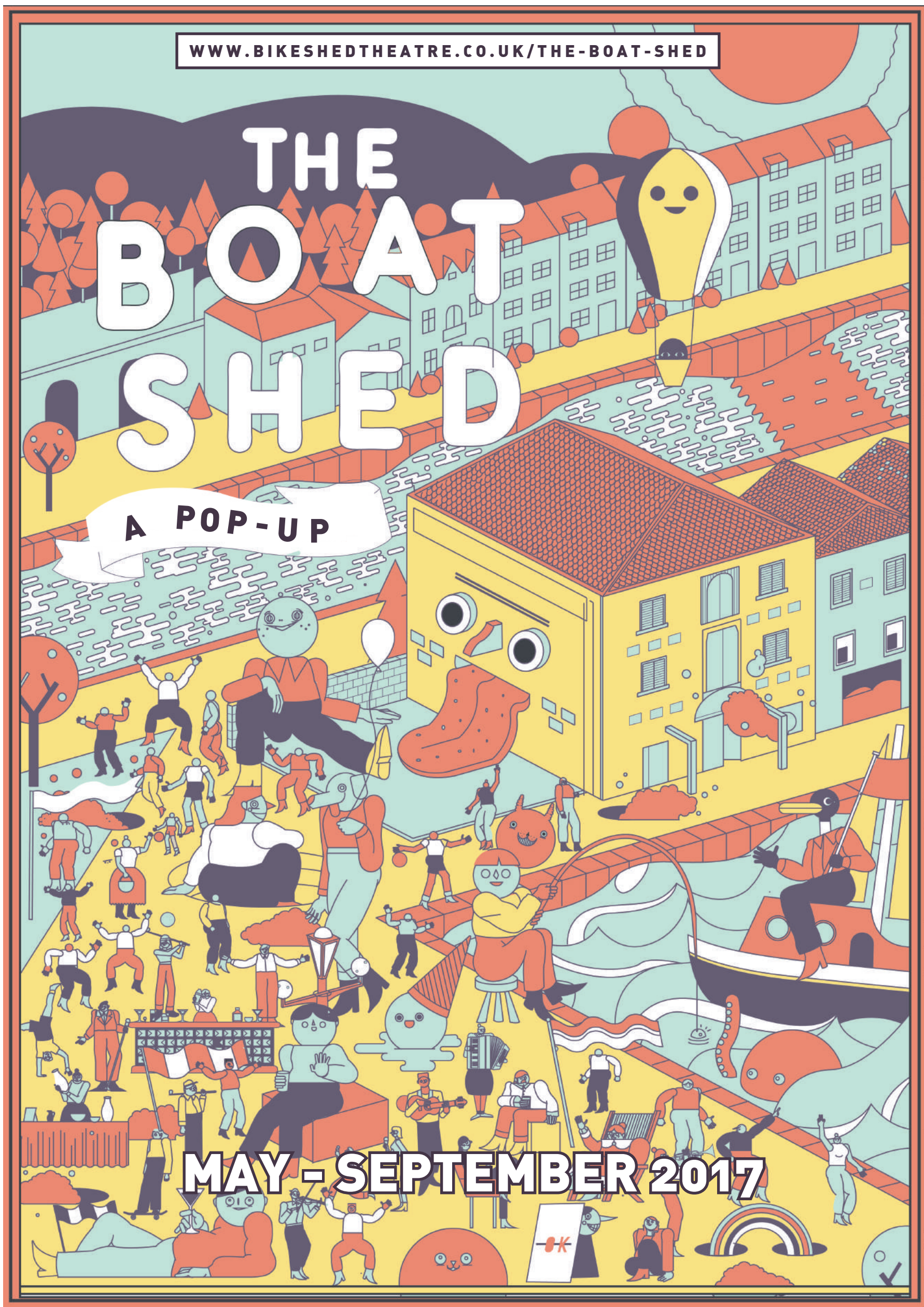


WWW.BIKESHEDTHEATRE.CO.UK/THE-BOAT-SHED

THE BOAT SHED

A POP-UP

MAY - SEPTEMBER 2017



It was a beautiful summer’s day when we walked into the building for the first time

Improbably, it was a whole four years ago. The plan was to turn it into a pop-up venue for a summer season. Two things quickly became apparent:

- 1. It would cost more money than we had to create a pop-up
- 2. The scale of the building meant it could be so much more than just a pop-up

Fast forward to now. We’ve spent the last four years creating and refining plans for how the building could be used and be sustainable. We’ve begun building relationships with arts and education organisations, our neighbours on the quay and those with whom we’d like to share the building. We’ve prepared the ground for funding applications (this grand project costs an eye-watering £6 million - or a quarter of a swimming pool, as it is known in Exeter).

And now, finally, we’re trying the pop-up - the reason we came down in the first place. This has been generously supported with donations from 500 people and, with a little financial speculation from our bar and other catering collaborators, we’re planning to create something a little different for Exeter and, indeed, we think unique in the world.

Each component part isn’t unusual. One of our three spaces will start life as a gallery - there was a gallery two doors down ten years ago. It’ll then become a theatre - again, these spaces have been used for performance in the past. And then it’ll be a mini golf course. I’m not sure these spaces have ever been used for mini golf but perhaps there’s a reason for this...

The other spaces will house a couple of bars, a barbecue and ice cream parlour. Someone has been in touch to offer us a photographic archive of the quay in the 1960s and 1970s, which we hope to display. Another person plans to take photos of people in the bar with his home made camera the size of a shed, complete with dark room.

In June, we’ll host a craft market, a mini music festival and a hustings. And in September, we’re planning a flotilla.

None of these things is new. What is a little different is putting them all together. And that’s where we start.

In ancient Greece - bear with me - each city had a place for artistic, spiritual, political and athletic life to coexist. It was called the agora. Over time, artisans would make use of this public space, turning it into a market place of produce alongside ideas. Distinctions between commerce and art, socialising and health, civic engagement and philosophy blurred. Or, perhaps more accurately, they benefitted from their close proximity to one another.



PHOTO: BENJAMIN BORLEY

Around the same time, along the Exe estuary, the Dummonii settled. Greek coins from this time have been found in Devon showing trade existed with the rest of the known world before the arrival of the Romans in Britain. For the next two thousands years, Exeter continued to trade with the rest of the world, refining its exports - notably wool, which made the city the third wealthiest in the country in the seventeenth century - and importing products and ideas from other places. We simultaneously celebrated the skill of local craftspeople - and local sheep - whilst being influenced by those from elsewhere.

And it is this that we’re keen to rediscover with the Boat Shed. We want it to be a new type of cultural building, harking back to historic precedents.

It feels to me that we’re living in a time where the irresistible drive of globalisation is leaving people disempowered and frustrated. In the face of multibillion pound corporations, we are insignificant cogs in a machine that doesn’t seem to be operating for our benefit. And so many of us work in jobs where the product of our labour is either intangible or doesn’t seem to relate back to the places in which we live. The rise of automation and of digital technology was meant to free our time for leisure and recreation. And yet here we are, more trapped than ever, our actions more remote from their impact.

What do we do about this?

Some believe the response is to pull up the drawbridge, that globalisation can be stopped and the lack of empowerment that this has engendered can be reversed.

Others believe the forces are so strong that the end result is inevitable. They argue that we should resign ourselves to a world without borders.

As ever, though, there’s a third way. And I believe this is to learn from the past as we go forward. We need to rediscover the value of place-based, human-made stuff. That means valuing what is made locally as much as bringing in things created globally.

That’s how we plan to run the Boat Shed once it is fully opened. In our market place, in our co-working spaces, in our restaurant and bars, in our rehearsal rooms and in

our theatre, we will give equal weight to the global and the local. In the theatre, this means half of the work presented will be created within a thirty-mile radius. The other half will be from anywhere in the world. In the restaurant, our ingredients will be grown, reared or caught locally, though the dishes may have global influences. Our market will give space to the thousands of craft makers in Devon. And our rehearsal rooms and co-working hub will have students, emerging Exeter companies and invited international creatives in adjacent spaces.

All of which makes things sound rather set, almost as though we’re ready to open tomorrow. We’re not, of course. Which is why we’re doing the pop-up.

This is an experiment. We want to test a few of our ideas and see whether they’ll work. Do you want a barbecue? Do you agree with me that goats milk ice cream is tastier than cows milk? Are mini golf courses a revolutionary idea for theatres or a silly waste of space?

Our plans are a long way from being finalised. Through this summer, we’ll discover some of what works and what doesn’t. Your experiences will directly inform how this building is realised. And, as ever, we’ll provide you with plenty of opportunities to let us know what you think.

Things don’t stay put. One of the main reasons why I love theatre is its live nature. As an audience member - in the same place, at the same time - you are a vital part of a live experience. Come on a different night and you’ll see a different show. We’re aiming for the same thing with this new venue. The frame will be fixed, but what happens within it will flex and shift as the years go by. It is yours as much as it is ours and its future use will be defined by how you want to use it, not by how we - or anyone else - think you should use it. A bit like an agora.

But that’s enough theory.

Come on down. Watch, listen, talk, taste, enjoy. You’ll be very welcome.

David Lockwood
Director, The Bike Shed Theatre

What's on at a glance...

ART
Art Week Exeter
Until 21 May

Makers of the Multiverse
Until 10 June

CRAFT
Artket Craft Market
10 June

MUSIC
Sounds of the Multiverse
10 June

THEATRE
27 June – 29 July

MINI-GOLF
2 August – 2 September

COCKTAILS, BEER,
ICECREAM AND BBQ'S
From 26 June

The Boat Shed, Maclaines Warehouse
Haven Road, Exeter, EX2 8GR
BOX OFFICE: 01392 434169
bikeshedtheatre.co.uk/theatre

COVER ILLUSTRATION
AND DESIGN BY
PATRICK CULLUM
WWW.PATRICKCULLUM.COM



Creating flexible, open-hearted and inviting spaces

Roger Watts, Design Director of Haworth Tompkins architects

The Maclaines Warehouses, sitting between the River Exe and the canal basin, are a string of beautiful, robust brick and timber buildings with a deep historic past and huge future potential. We have worked closely with the Bike Shed Theatre to explore, with the minimum of deft interventions, how these wonderful richly textured buildings can be sensitively upgraded to provide the artistic community of Exeter with a flexible, open-hearted and inviting set of spaces for performance, music visual arts, indoor markets and social spaces. The designs are to make the spaces better interconnected, fitted out with power and data, thermally upgraded and made fully accessible whilst retaining their rich “found” materiality, to give a loose fit adaptable series of spaces that can hold a rich tapestry of uses.

A new extension, facing the approach from city centre, takes its form from the former “Mitchell & Sons” building, will be a more open, light and airy double height foyer space and cafe bar with a stair up to a 250 seat double height auditorium on the first floor. The warehouses will have a wide range of scale spaces over 3 floors, informally interconnected giving an open invitation to artists and the community to come in and explore.



The Boat Shed is one of the most exciting cultural developments in the country...

it could transform the whole of Exeter’s cultural face. When it’s combined with the vision - the inventiveness and originality - of The Bike Shed Theatre, it will attract all sorts of innovative theatre people and very contented audiences.



Richard Eyre, film and theatre director

The Plan

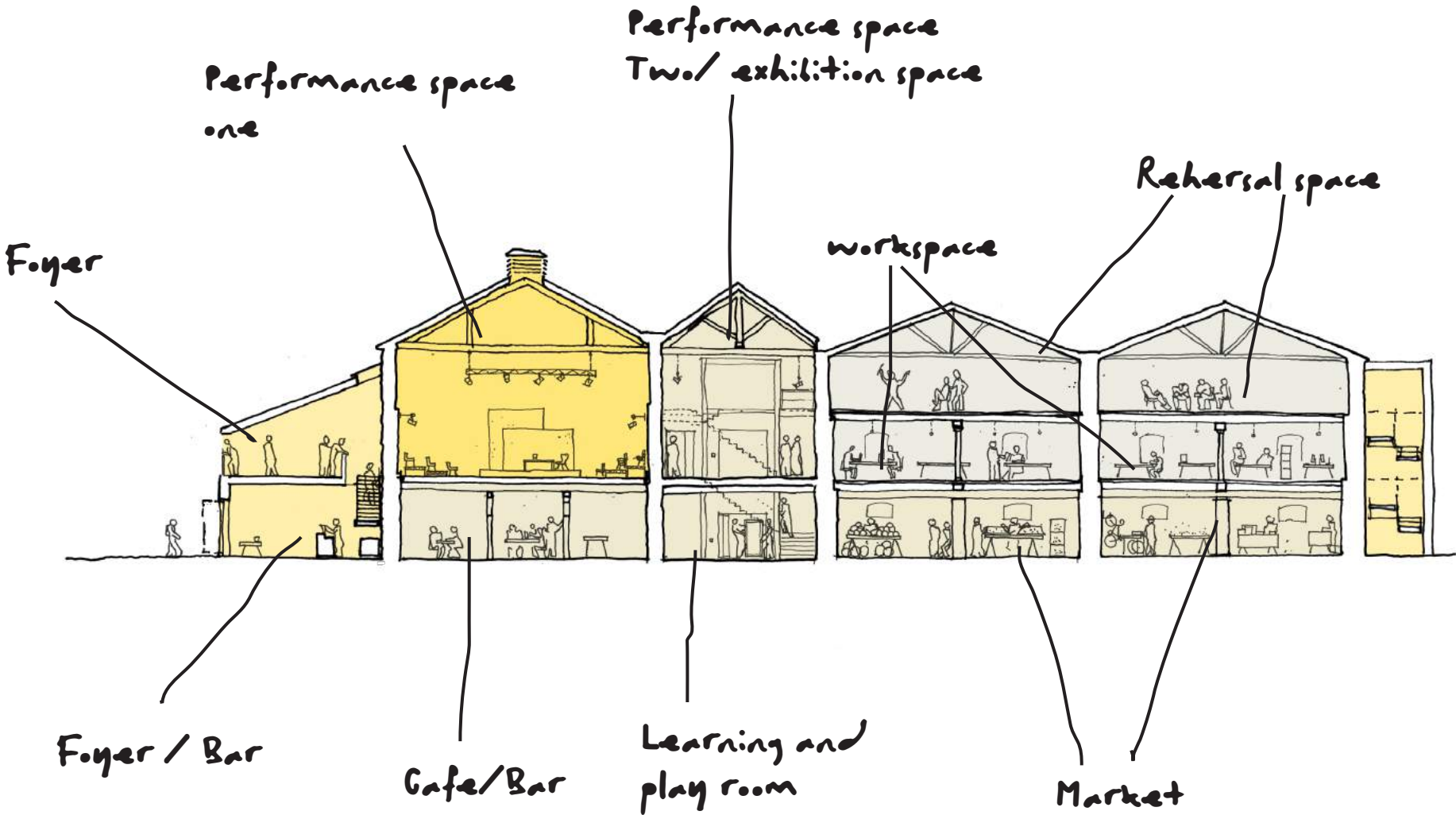


Photo credit: Benjamin Borley



We’ve been working with students and academics at the University of Exeter, alongside other educational organisations, to explore the potential for collaboration in the Boat Shed. The development of skills, support for innovative ideas and celebration of creativity are central component parts that underpin our thinking for the long term future of the venue.

ART WEEK EXETER

Art Week Exeter (AWE) is Exeter’s first city-wide contemporary visual arts festival, showcasing local, national, and international artists. 2017 is AWE’s second year. With free exhibitions, workshops, and events, there’s always something new to explore.

The three exhibitions at the Boat Shed promise to delight and spark your curiosity: Sarah Thomas with *Plume–Excess–Refine–Repeat* dives into an obsession with plume and swagger in the everyday; Felicity Shillingford and Patsy Lang with *Sole Searching (Part II)* look at shoes in our lives; and Ben Yates uses jewellery, photography and sculpture in his show *ButNotAsWeKnowIt*.

There is the chance to engage with artists, through RSA Fellow Mariana Lopez’s *Abyssal Fashion* Exhibition and talks by colleagues, including Helen Newcome, who creates swimwear made with used fishing nets and Philippa Roberts who will discuss the importance of designing out waste. You can make your own stand-alone Atari Punk Console noise machine with Farmer Glitch or just grab a pencil and join in with the social at the Drink and Draw.

There’ll also be art you can drink with The Abstract Art Cocktail Commissions at the bar and Live Art Busking right outside with Street LAB on public pianos. From grunge to glamour, gritty to gorgeous, AWE at the Boat Shed will change the way you view Exeter.



Plume–Excess–Refine–Repeat Sarah Thomas

Until 21 May, 12pm - 8pm, FREE

Sarah Thomas’ collages of appropriated images physically extend beyond the border of the frame challenging the viewer to question the world around them by juxtaposing imagery and objects.

Visual and physical repetition, decoration and a need to reinvent are common themes that exist throughout Sarah’s work. The act of covering over for her is a form of decoration, changing either the object that is being wrapped or the page that is being drawn on, reinventing its surface and its mass.

She is interested in the limitations and boundaries of the flat page. Sarah explores these themes through the process of selecting and deselecting collage images and materials, giving equal importance to both the positive and negative space within the composition. Sarah wants her work to challenge the viewer to question the world around them by juxtaposing imagery and objects of the everyday and of an otherworldly place. Evoking feelings of disorientation and unease whilst also creating elation and joy through her use of materials and

colour. She creates work that questions the distinctions between “rational” methods and “irrational” influences.

She has many influences, some of which become ‘obsessions’ that reoccur throughout her work. A predominant theme is the vast study of socio-cultural and archaeological anthropology. One area in particular is the creation of objects made to transform its wearer, for example objects like elaborate headdresses and costumes that inflate the status of the wearer bridging between the real and spiritual worlds.

Sarah’s work practice includes sculpture, collage and drawing. She has exhibited both nationally and internationally and also has extensive experience of gaining and curating public and Arts Council England funded community-based projects.

Visual Art



Felicity Shillingford and Patsy Lang



Abyssal Fashion



Street LAB

Sole Searching (Part II) Felicity Shillingford and Patsy Lang

Until 21 May, 12pm - 8pm, FREE

What do your shoes say about you? Your shoes identify you – the style, the height, the function, and how they make you walk. Shoes identify your status in society, what group you belong to, the activity you are undertaking, and your approach to life.

Sole Searching is about society’s footwear choices. We will be looking at the shoe’s great power to establish identity, status and the personality of the wearer. We will look at this phenomenon in relation to cultural identity, symbolism in stories, mythology, contemporary identity trends and the most expressive of all - the shoe as sculptural object.

ButNotAsWeKnowIt Ben Yates

Until 21 May, 5.30pm, FREE

A quirky exhibition of jewelery made from colouring pencils, 3-dimensional photography and electronic cityscapes inside coffee tables.

Abyssal Fashion Exhibition

Friday 19 May, 2 - 6pm, FREE

Abyssal fashion- is an exhibition created by a sustainable fashion designer and an oceanographer addressing the plastic pollution in the sea.

Talks

5pm, FREE

Designing out Waste by Philippa Roberts

The importance of design in reducing waste.

Davy J by Helen Newcome

Inspired active swimwear created from used fishing nets.

The Ocean Corner by Mariana Lopez

A collaboration between women working for the oceans in Arts and Science.

Street LAB

19, 20 May 10am - 7pm, FREE

Street LAB is a micro-festival of live art with a musical twist occurring on the streets of the city throughout Art Week Exeter.

Listen to a range of musical talent or have a go at busking yourself on our pop-up piano, positioned by Music In Devon Initiative.

Atari Punk Console Workshops

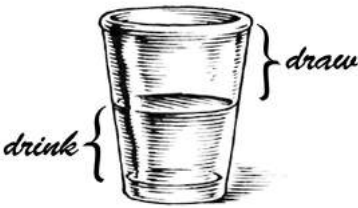
20 May, Beginners 10am and 11.30am, £20
Advanced 1 - 4pm, £25
Booking via bikeshedtheatre.co.uk

Farmer Glitch creates bespoke hand-made instruments/ sound machines by hacking and repurposing found objects and utilising redundant media and technologies. This opens-up new avenues for design and improvisational performance.

Drink & Draw Friday

19 May, 7 - 10pm, FREE

Bring drawing materials, grab a drink and hang out like an artist! Berets (whilst being bang-on trend) are optional, ditto that grubby smock. Beginners and accomplished draftspeople are all welcome.





WOOL, WATER AND WEALTH

Exeter's canal and quay heritage

The River Exe rises in the mosses of Exmoor and winds down through the length of the county of Devon, gathering its waters along the way from one of the great sheep-rearing areas of Britain. At Exeter, the river meets the sea and its waters mingle with the oceans. Here, at this interface, people have gathered for centuries to trade their wares, hear stories of distant lands and build a city of enterprise.

It was the humble sheep that laid the foundation of Exeter's wealth. In the 17th century Exeter grew to be Britain's third-richest city (after Bristol and London) on the back of the wool trade. The city became a hub for the import of wool and its conversion to cloth. Exeter serge was so sought-after that merchants had to import wool from Ireland to meet demand. The river was the golden thread, linking Exeter and Topsham to markets for Devon serge in Italy, Spain, Portugal, Holland and London. The returning ships brought back iron, wool, nuts, wine and fruit, as well as rich cultural exchanges.

To accommodate this growing trade and the larger ships now wanting to travel up the river, the city invested in a canal linking the Quay to the deeper river channel below Countess Wear. The canal was opened in 1566 and subsequently extended, widened and deepened in phases as trade, and the size of ships, grew ever larger. The glory days of Devon serge came to an abrupt end with the Napoleonic Wars in the late 1700s, which cut

ties with continental ports. Attention turned to domestic trade and Exeter grew as a hub for the south coast, exporting such goods as paper, leather, flour, butter and cider. However, the tidal river with its shoals and shallow channels remained a constraint and so over the period 1825-30 the Exeter Chamber invested over £113,000 (many millions in today's terms) in extending the canal by two miles and building the Turf Lock, as well as building the Canal Basin at the head of the canal. It was here that the Maclaines Warehouses were built between 1835 and 1839, to take advantage of the explosion of trade that was to follow. Prosperity did indeed come - the gross income of the canal trebled and at its peak in the 1870s the canal was carrying over 400 shipments a year with key imports being timber, petroleum, coal, wine, dried fish and French onions! We have yet to discover precisely how Maclaine's Warehouses were used during their heyday, but we know that at various points they were owned by a fruit importer and a builders' merchant.

Close on the heels of the canal's expansion came the arrival of the Bristol and Exeter Railway in 1844. Suddenly goods could be transported overland far more cheaply than before and other ports, with better deep water access than Exeter, were able to use their new rail connections to great effect. Gradually the volume of shipping coming in to Exeter and its sister port at Topsham declined and the range of products shrank,

until by the 1960s the canal was mainly used to import petroleum and timber. The last shipment was made in 1973.

As trade declined the Maclaines Warehouses fell into disuse. In the late 1960s Exeter City Council was approached by Major David Goddard, a historic boat collector, to propose the creation of a maritime museum. So, the Exeter Maritime Museum was born, opening in 1969 with just 22 boats. Major Goddard operated the museum for nearly 30 years during which time the collection grew to over 300 boats. Although much-loved by Exeter residents the museum ultimately struggled to survive and closed in 1996.

Since then Maclaines Warehouses have lain dormant, partially used by a variety of businesses but never realising their potential as a significant part of the culture and heritage of Exeter's Canal and Quay.

Credits:
"The Ports of the Exe Estuary, 1701-1972", E A G Clark, in The New Maritime History of Devon - 1994, www.exetermemories.co.uk

Craft Market



Paper Boat Artket

10 June, 11am - 4pm, FREE

Artket is based on the idea that every idea starts with a sheet of paper, the art market is a platform for independent, artisan, craft and DIY designers and illustrators to showcase their work.

Each market takes place in a vibrant and lively environment. Come along and browse the best that Exeter's creative side has to offer. Whether you're looking for a stylish addition to your home, or seeking out some extra special presents, Artket has it covered.

Showcasing established independent designers, whilst nurturing and encouraging up-and-coming talent, our carefully selected stalls range from unique illustrations, bespoke apparel, gifts, accessories, furniture, ceramics plus much more.

Music



Sounds of the Multiverse

10 June, 6pm - 9pm, FREE (plus a reduced price gig at the three venues after)

Some of Exeter's greatest music venues - Exeter Phoenix, The Cavern and The Bike Shed Theatre - have come together to bring you Sounds of the Multiverse, an evening of live music and DJ sets on the sunny piazza*

From 6 - 9pm, you can sip on a quality beverage from the cocktail caravan whilst listening to short live sets from some excellent bands and DJs. Then, as it gets a little cooler, you can follow your favourite band for a full gig at one of the three venues.

Following an acoustic session at The Boat Shed, The Loft Club will head to The Bike Shed Theatre on Fore Street to deal some stomping, colourful, sixties tinged tunes complete with soaring harmonies and instant sing-along choruses.

Visit bikeshedtheatre.co.uk for updates.

* If it's not sunny, no worries - we'll move inside The Boat Shed.



This is an exciting development which will be hugely successful for artists and audiences alike.



Ben Bradshaw MP

FOOD AND DRINK

The whole bar team couldn't be more excited about our summer pop up. It'll be the first time many of us will have seen daylight, but we can't wait to come out from the cellar and make some drinks in the sunshine. We have the cocktail caravan outside, ready for shaking and stirring delicious drinks all summer so you

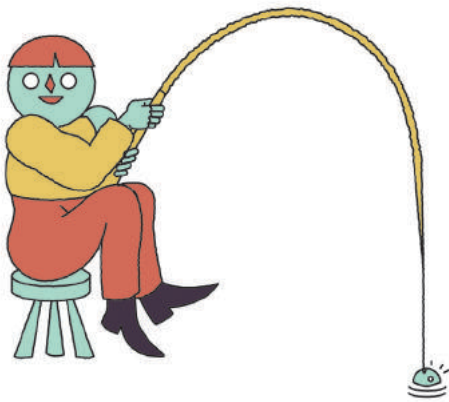
won't even have to miss a ray of sunshine to order a drink.

Inside the Boat Shed we have a brand new bar, with lots of beer and even more cocktails from our new summer menu. Keep your eyes peeled for our boozy slushies, the perfect thing to keep you cool when the sun is beating down on the quayside (I'm feeling very optimistic about the weather).

The Boat Shed has been a really fun challenge for all of us at The Bike Shed, we've been working hard, planning, building, painting and tasting. We're so thrilled to finally see the fruits of our labours and share a drink with you by the water.

Looking forward to seeing you there,

Justin Brock
Bar Manager



'It's going to be ground-breaking. Not just for Exeter but for the whole country'

Naomi Hart

This will be an amazing new place for people to spend more time together. It will be great for the community and a quirky, fun environment.

Chris Shaddrick



COCKTAILS

We'll have a wonderful array of beautiful cocktails for you to try out and we'd like to give a special thanks to Koko Kanu who sponsored our beautiful Cocktail Caravan. Rum is the taste of sunshine, and Koko Kanu is a really special coconut rum from the Wray & Nephew distillery so sit back and sip in our lovely garden and imagine you're in the Caribbean.



BEER

All summer long we'll have delicious beer flowing from Meantime Brewery, who've helped us to build this fantastic bar. Based in Greenwich, Meantime has won a worldwide reputation for beers of great quality and provenance.

Meantime was the first British brewery to win any medals at the World Beer Cup in 2004 and is the only British brewery to have won medals at every World Beer Cup since. It was the first British brewery to produce a fair trade beer and is the only British brewery that can put a champagne cork in a beer bottle!



COFFEE

Exeter Coffee Roasters

Good coffee, well made, by nice people.

As Devon Coffee on Queen Street we opened our doors to the lovely folk of Exeter in 2012. Now in our current guise as Exe Coffee Roasters, we're so proud to be supplying The Boat Shed with a special Neighbourhood Espresso.

A unique blend of 3 coffees from Brazil, Burundi and Ethiopia. Roasted in Exeter on traditional gas flame, drum roasting is about the relationship between heat, time, air flow and drum speed. Expect bright, sweet and aromatic coffees that burst with life and are full of flavour. To produce your coffee, we are happy to pay premium prices to procure the highest grade green coffees available, with one of these coming from Finca Filadelfia, a 6th generation coffee grower.

Here we have two Exeter institutions with a shared value of providing theatre; be it on stage, in a cocktail bar or even in a coffee shop.

BBQS AND TOASTIES

With fresh bread from The Boatyard Bakery and Cafe, just a bun-throwing distance across the canal, we'll be cooking up a variety of toasties seven days a week from morning 'till night. Then at the weekend, The Smoke Pit and Grill from Beer and Vittles will fill the air with the smell of BBQ. Think low and slow smoked meats, cooked over apple wood and locally produced retort charcoal, to grilled meats, all served with unique homemade sauces and sides, inspired by the very best of BBQ from across the world.



ICE-CREAM

Dartington Dairy

Delicious goats milk ice cream? You've got to be kidding me!

This creamy, tasty treat is ice cream with a twist - it comes from the farm's herd of mischievous goats and is a pure flavour sensation.

Dartington Dairy's ethos is to promote sustainable farming practices, deliver the finest quality ice cream and to continually reinvent how we enjoy the freshest, premium dairy produce.

With a variety of indulgent flavours such as 'Madagascan Vanilla', 'Gin, Elderflower & Honeycomb', 'Dark Belgian Chocolate', 'Salted Caramel' and 'Garden Mint Chocolate Chip' you are sure to find a flavour to delve into and enjoy.



OPENING TIMES

Cocktails, beer and ice-cream will be available from The Cocktail Caravan outside on the green until 21 May.

On 26 June we'll open our full bar inside the Boat Shed serving delicious drinks along with tasty toasties and locally-made ice-cream from 9am - 11pm. Succulent BBQ'd food will be supplied courtesy of The Smoke Pit and Grill every weekend throughout the summer.



LandWorks

Not just an ordinary table

The Boat Shed's tables have all been produced by LandWorks which offers a supported route back into employment and the community for those in prison or at risk of going to prison.

With the help of a network of over 1,000 registered supporters, this community-led project provides a working day structure using woodworking, veg growing, arts and crafts, construction, and landscaping. Around this, they weave other skills, social skills, building self-worth and getting people to mix in a pro-social environment.

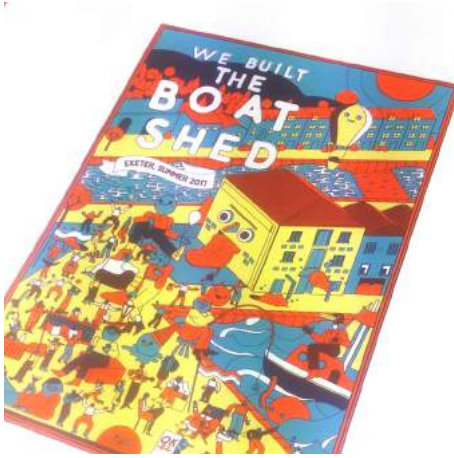
Some facts:

It costs £36,808 to keep one man in prison for a year
Reoffending costs the economy an estimated £13 billion each year

LandWorks saves the community money, with a 6-month placement costing just £6,000

46% of prisoners reoffend within one year of release.
The comparable reoffending rate for LandWorks trainees is 4%

For more information about this wonderful project, visit www.landworks.org.uk



Print making and possibilities

At the Boat Shed, you'll see some gorgeous screen prints of the Boat Shed pop-up by the very talented Patrick Cullum. They've been printed by our good friends at Double Elephant Workshop. If you haven't been before we highly recommend taking a look. Based at Exeter Phoenix and working across Devon, they offer a huge range of courses for professional printmakers, artists and also complete beginners.



Visit doubleelephant.org.uk



Life on Exeter's Canal and Quay by Heather Baker of Saddles and Paddles

My business sits at the heart of Exeter's beautiful Quayside and I must say, there can't be many places in the country to have a better workplace. The Quay is just a five minute stroll from the hustle and bustle of the city centre and yet it feels like you've stepped into the French Riviera, with pubs, restaurants, shops and activities in a picturesque waterside setting.

My favourite thing about the Quay and Piazza areas, which surround the River Exe, is the relaxed ambience and beautiful environment, helped by being in a traffic-free setting, allowing people to slow their pace and their minds and enjoy the area.

You can't beat the Quay for gift shopping - within lots of the historic cellars, you'll find quirky gift shops and local produce from independent traders, from antiques to woodwork, jewellery, metalwork and arts and crafts gifts. And for a break from your shopping, we're spoilt for choice for cafes, with great coffee being served on both sides of the water!

We are also blessed to have a wide range of pubs, bars and restaurants - most famously, the Prospect Inn, which serves local beers and great food, and On The Waterfront, with its infamous giant pizzas - both family friendly and benefiting from fantastic outdoor seating to enjoy the views. Bar Venezia on Piazza Terrancina is a unique venue, offering a Mediterranean feel on the waterside, with salsa dancing on a Sunday night. In the last few years, we've seen new and exciting venues opening at the Quay, which includes Samuel Jones Smoke & Ale House, Puerto Lounge Café Bar, Dr Inks Cocktail Bar and Bierkeller.

And I'm obviously biased, but the Quay is a great location for activities too! As well as ourselves, offering bike, canoe and kayak hire, we have the fantastic Quay Climbing Centre on the Piazza, plus watersports experts AS Watersports and the Haven Banks Activity Centre for visiting schools.

Whether you are walking, cycling or paddling, the Quay is the perfect location to start from, with 6 miles of calm canal waters and the Exe Estuary Trail to explore. And if you want a more leisurely visit, why not take a trip on the ferry with Exeter Cruises, which runs to the Double Locks Pub and back on the canal.

It's a truly fantastic place to work - which is why we've seen some exciting new creative groups choose it as their base, like the Exeter Cookery School, The Generator work hub and The Bike Shed Theatre's new project, The Boat Shed.

With so much to offer, it's not hard to see why the Quay is such a fantastic place to visit, eat, shop and play. Come and visit us soon!

As an independent business owner I want Exeter to be a strong, thriving city. The Boat Shed will draw people in day and night attracting more people to live and work here. It'll make Exeter a better city to do business in.

Mattie Richardson, BID Director of Fore Street





Great stuff has gone before...and there's some mighty fine theatre happening now

Nikki Sved, Artistic Director, Theatre Alibi

I was recently asked to say a few words about how the Cultural Scene in Exeter has changed and developed over the time I've been working here. 'Great', I thought! As the Artistic Director of Theatre Alibi, and as an actor and undergraduate before that, I've been working in the Arts here for the last 30 years. And stories are my meat and drink - my day to day. I decided that I would tell the story of the progress we, the Exeter Arts Community, have made over the years.

But, of course, stories are a construct. They're a way of shaping reality, of seeing things through a very particular filter, and helping us to grapple with the huge complexities of the world. They give, what might be chaos, a beginning a middle and an end. Try as I might, I couldn't squeeze 30 years' worth of comings and goings, hurdles and triumphs, into the neat pattern of a satisfying narrative arc. Stories, at their worst, can be reductive.

But there's a lot to be said for a complicated maze. There are a whole series of ventures that I've witnessed over the years and now when I walk around the city I see the happy ghosts of arts events gone by - A trio of singing and dancing crows in the old Kennaway Bonded Stores down on the quay; fantastically quirky animations lighting up the walls of the cathedral; elephants floating gracefully down the Exe; Music hall numbers echoing through the Guildhall shopping centre. And soon the Boat Shed pop-up will create a glorious new clutch of apparitions!

I'm wary of saying that we're doing things for the first time - which is what would really suit a cracking yarn. There's some mighty fine theatre happening in the city now, but I'm reluctant to say that it hasn't happened before. Some of you may have sat wide-eyed through the fantastically radical shows that were put on at the, now-no-longer, St Luke's Theatre in the 1980s or going back even further, perhaps a few of you made up the

audience at the Northcott during Jane Howell's ground-breaking reign as Artistic Director in the 1970s. You well know that great stuff has gone before.

Perhaps part of the reason it's not easy to come up with a straight forward story is because we haven't had one giant arts organisation in the city, eclipsing all others and making their story our story. I think that's a good thing, isn't it?

I might not have found a distinct and satisfying tale, but two aspects of our current situation do seem to me to be strikingly new. I've never known the City Council to be as positive and encouraging about the Arts as it is now. How wonderful is that? When I think way back, it seems almost miraculous that there's now a real recognition from the City Council that artists, far from being a bunch of self-indulgent luvvies, can and do make a fundamental difference to people's lives. It takes real grit to hold on to that precious thought, especially in difficult times. So, thank you.

And the second thing that feels different in the city? Over the past few years people working in the cultural sector have been talking to each other. Really talking, not just paying lip service to the idea. Of course, conversations and collaborations have happened in the past, but I don't remember them being so all encompassing and inclusive. It takes some organising to surround a table with venue managers, visual artists, academics, Artistic Directors, a Football Club Chairman, a Museum Manager, to name but a few. And even more careful management to make sure that we leave that table having made some concrete decisions. But it's happening, and there's no doubting that we're stronger when we stand side by side. We should feel proud of ourselves for resisting the urge to have our elbows out, especially when money is tight. And now, when there are battles to be fought, as there no doubt will be, I know we'll be fighting them together. And when there are triumphs to be celebrated, there'll be a great mix of voices cheering.

Exeter Festival 1975

Alan Mazonowicz/Exeter Memories

Exeter's full of cultural venues from the iconic to the hidden gems. Have you been to them all? We've compiled a list so that if you're in need of some inspiration, you can take a walk around the city and check them out. We're bound to have missed some out but this should get you started.

For a full list of cultural organisation and to check what's on, go to www.visitexeter.co.uk

The Barnfield
The Bike Shed Theatre
Exeter Cathedral
The Corn Exchange
Custom's House
Cygnet Theatre
Devon Libraries
Double Elephant Print Workshops
Exeter City Football Club
Exeter Chiefs Rugby Club
Kaleider
St Nicholas Priory
Exeter Northcott
Exeter Phoenix
Royal Albert Memorial Museum
Sound Gallery
Phonic FM

FESTIVAL TICKET OFFER - 5 FOR £20

Book 5 tickets for shows for just £20*

Theatre

Sarah Keyworth: Work in progress

27 June, 6pm, £5

Sarah Keyworth is a member of Generation Y. In this hilarious show Sarah explores what it is like to grow up feeling like you can be whatever you want to be only to realise you're no more special than anyone else.

Give Me Your Skin

Tom Ross-Williams & Oonagh Murphy
27, 28 June, 7.30pm, £8

What if patriarchy was a game and we could break the rules? *Give Me Your Skin* offers a fresh perspective on gender inequality inviting you to play a series of games that test out the 'nature/nurture' debate.

Cam Spence: Matriarchy Experience

Work in progress
28 June, 6pm, £5

'Tired? Depressed? Your gender getting you down? Experience what this world would be like if it were a matriarchy. Character comedy that will provide a holiday for your gender binary.

The Land of My Fathers and Mothers and Some Other People

Rhys Slade Jones
29 June, 6pm, £5

My parents fell in love in 1977 in a sweaty, smoky rugby club in the South Welsh valleys. I've never fallen in love but I've heard it's a nice thing to do. This show is my attempt to recreate the rugby club, the shouting, the sing songs and to see whether it was just easier to fall in love in the 70's.

Great Train Robbery

Scratchworks Theatre Company
29, 30 June, 7.30pm, £8

In the early hours of Thursday 8th August 1963, the heist of the century is under way. Five days later the gang is busted and the rest is history. But what about the ones that got away? Using a raucous combination of physical theatre and live music, award-winning Scratchworks will uncover the truth about history's forgotten women.

'The show was a marvel to behold. Great Train Robbery is a must-see.' PLYMOUTH HERALD



GREAT TRAIN ROBBERY

All In

Embolden Theatre - work in progress
30 June, 6pm, £5

Come and join Embloden Theatre for a brand new comedy experience.

'A beautiful, otherworldly experience'
THE TELEGRAPH (On *Beard*)

The Conversation

Lauren Aimee Burch
1 July, 7.30pm, £8

The Conversation is a piece of autobiographical performance art which explores the topic of consent. Don't worry, she's not looking to shock you and she's definitely not angry at you. She just wants to impress you.

Great British Mysteries

The Cloak & Dagger Club
1, 2 July, 9pm, 14+, £5

A live mockumentary investigating monsters, myths and Noel Edmonds. Will Close and Rose Robinson are excellent performers having performed together as original cast member of 1927's Golem (Young Vic and West End) and with Rose named as one of The Metro's 'Hilarious women to look out for in 2017.'

'A hilarious world of weirdness' METRO

Live Before You Die

Bryan Vincent
2 July, 6pm 3 July 7.30pm, 16+, £5

What do you do when you have a best mate who is so sad he might die? Especially considering up until now your friendship has mostly consisted of a mutual appreciation of nineties hip hop, borderline alcoholism and finding poetic ways to call each other dickhead.

Byron is a bipolar performance artist, Dave only communicates in insults. Together they must find a way to fix Byron's broken soul before it's too late.

Wake Up & Deirdrealize

I Am Nincompoop
2 July, 7.30pm, 3 July, 9pm, 16+, £5

Hailing all the way from Texas-Tennessee, Deirdre is more magnanimous than Gandhi, sexier than chocolate, hotter than the sun. Her show is an audacious combination of story-telling and game show, with a dark twist.

Bigamous

Eleanor Colville
4 July, 6pm, £5

Come along for an hour of popping characters, cracking sketches and goddam depravity.

'A combination of delicious writing and perfect comic timing' ★ ★ ★ ★ VARSITY

THEATRE CONTINUES ON PAGE 20

*terms and conditions apply

GREAT THINGS GROW

Aaron Harverson	Boudicca Maloney	Debbie Wills	Helen Watts	Kathy Norris	Martin McDonagh
Abi Matteson	Bridget Garrood	Debby	Helena Middleton	Katie Howard	MartnLau
Abigail Leighton-Boyce	Briony Vallis	Dettie Ellerby	Helenlisk	Katie Keeler	Mary Ann Jennings
Adam	bthorne	Dom Jinks	Howard	kay faulkner	Mary Booker
Adam Quayle	Carol Fentimen	Dominic Acland	Hugh Janes	Keith Hylands	Matt
Al Dunn	Carol Pike	Dominic Clarke	Ian Farnfield	Keith Palmer	Matt Ball
Alex Jackson	Caroline Aird	Dominic Treacher	Ian Matthews	Kev and Fliss Terrill	Matt Barker
Alex Jenner	Caroline Sandford	Dora Lynn	J Frankland	Kirsten Gent	Matt Burrows
Alex Wilson	Carry Faircloth	Doreen Murray	Jaana Pinchard	Kirsten Layton	Matt Daw
Alexa Tewkesbury	Cartridges Law	Doug Crix	Jacky Cox	Kirsty Brodest	Matthew Hammond
Alexander J Allain	Cassie Leicester	Ed Viney	Jacqueline Roche	Kirsty Cox	Mattie Richardson
Ali Hodgetts	Catherine Cartwright	Eddie Holmes	James Emmerson	Kirsty Ford	Mel
Alison Alker	Catherine Coe	Kostakis Theodossiou	James Hennessy	Kostakis Theodossiou	Melanie Wright
Alison Jones	CeriMcWilliams	Kris Bennett	Jane Cope	Kylee Larissa	Melissa N Barrett
Alison Whiteoak	Charlie Parker	Kylee Larissa	Jane Green	Laura Doble	Michael Buckland
Amanda Chadwick	Charlie Watts	Laura Doble	Jane Mason	Laura Rugg	Michael Pollock
Amanda S	Charlie Whitworth	Laura Sangha	Jane OConnell	Laura Sangha	Michelle L Morby
Amerie Rose	Chloe Whipple	Laura Wilkinson	Jane Roper	Lauren Hitchman	Miranda Ballin
Amy Walton	Chris	Lawrence Sail	Jane Toy	MM Forbes Eldridge	
Amy Webb	Chris and Di Ruoff	Leigh Toney	Janett van den Berg	Mo Thursby	
Andrew and Lucy	Chris Headdon	Lesley Dunford	Jarrold Poynton	Mr Freeze	
Angela Bradley	Chris Jones	Lesley Robson	Jason Vandervlist Pring	Nancy Shetertline	
Angela smith	Chris Knight	Lily Otton	Jeff Glover	Natalie McGrath	
Angus MacKechnie	Chrissie Tarbitt	Lisa Thorne	Jenny Barnett	Natalie Vizard	
Ann Dean	Chrissie Walker	Lisa Vanstone	Jenny Mellings	Neal Whitfield	
Ann Keen	Christine Roberts	Liz Ayres	Nick Conner	Nick Parker	
Ann Stiddard	Christopher Harrison	Liz Finlayson	Nick Dickinson	Nicky	
Anna Ingram	Christopher Sargeant	Liz Watkins	Nick Parker	Nicky Hallam	
Anna Matthews	Claire	Lizzie Groves	Nicky	Nicola and Martin	
Anna Ross	Claire Dow	Lloyd Broughton	Nicky	Nicola Glassbrook	
Anneka Caisey	Claire Frances Harding	Lori Hilson	Nicky	Nigel Smith	
Annemariem Macdonald	Claire Guthrie	Lou	Nicky	Nikki Cripps	
Annie Chave	Claire Horrocks	Lou Scott	Nicky	Nikki Sved	
Annie Sykes	Claire Longhurst	Lucina Swain	Nicky	Nora Alexander	
Anthony Pig	Claire McKimm	Lucinda Holloway	Nicky	O'Reilly	
Arfona Jones	Claire Paynter	Lucy Stapley	Nicky	Pam Dowell	
Art4ArtsAche	Clarissa Brown	Luke Jeffery	Nicky	Pat Blower	
Ashley Dashwood	Claudio Bucella	Luke John Emmett	Nicky	Pat Steward	
Attewell	Claudio Matera	M Kelman	Nicky	Paul & Sue Villa	
Avril Silk	Cleo Jones	Madeleine Jevon	Nicky	Paul and Sue Williams	
Babs Knightley Short	Colin Stiff	Maggie Bonfield	Nicky	Paul Cartwright	
Becca Savory Fuller	Corinne Furness	Maggie Wayte	Nicky	Paul Chandler	
Becky Hawkins	CR Wood	Malgorzata Dzierzon	Nicky	Paul Heathcote	
Belinda Dillon	Craig Lunt	Malgorzata Maryniak	Nicky	Paul Manville	
Ben Richards	Cynthia Irish	Marc Colson	Nicky	Paula Crutchlow	
Benedict Douglas	Daisy Otton	Marie Kelsall	Nicky	Penny Hale	
Benedict Smidowicz	Dan Brimmicombe	Marie Maguire	Nicky	Penny Kay	
Benita Woodlock	Daniel Jamieson	Marjorie Brewer	Nicky	Pete Goodwin	
Benjamin Bigg	Dave Chappell	Mark Cotton	Nicky	Ruth Goodwin	
Benjamin Collard	David Hillton	Mark Helyar	Nicky	Pete Simpson	
Beth Bate	David Lindesay	Martin Ayres	Nicky	Pete Truman	
Bethan Highgate-Betts	David Murphy	Martin Higgins	Nicky	Pete Goodwin	
Bishops Exeter	David Prescott		Nicky		
Blenheim	Debbie Judd		Nicky		

FROM SMALL BEGINNINGS

Peter and Jill	Shivvy and Gary
Peter Cleasby	Simon Spoerer
Peter Colebrook	Tami Spoerer
Peter Thomson	Simon Goddard
Peter Vanderford	Simon Stanley
Phil Bowler	Simon Tytherleigh
Philippe Ariaudo	Simon Whewell
Pierrette Thomet Stott	Siobhan Murphy
Pippa Marriott	Sophia Clist
Polly	Sophie McCormack
Rachael Duthie	Stephen Ledbrooke
rachelsutton	Stephen Brimble
Rebecca Higginson	Steve and Val Hudson
Rebecca Metcalf	Steve Jones
RebeccaB	Stuart Chambers
Rhys Slade-Jones	Jane Chambers
Richard and Pauline	Stuart Crewes
Cresswell	Substance & Shadow
Richard Skinner	Theatre
Rob Browning	Sue Adams
Rob McDonald	Sue Ayres
Rob O'Neale	Sue Day
Rob Turner	Sue Pritchard
Robert Lockyer	Sue Cade
Robyn Emma Gabriel	Susie Donkin
Lawrence	Suzi Norris
Roger Killen	Tall Rose
Roger Spackman	Tim Burley
Rosanna Amato	Tim Harlow
Rose Romain	Tina Jeffery
Rosemary Stephenson	Tish Johnson
Rosie Barron	Tom Crocker
Roy Irish	Tom Hackney
Ruth Molins	Tom Langdon-Davies
Sadiesoo	Tom Mansfield
Sadiesoo	Tom Sherman
Sam Delbaere	Trevelyan Evans
Sam Hollis-Pack	Val Cole
Sam Randall	Valentina Todino
Sandra Joyce	Verity Richards
Sarah	Victoria Redler
Sarah Burton	Virginia Martini
Sarah Coomer	Wendy Drake
Sarah Holmes	Wendy Petitdemange
Sarah Hooper	Will Young
Sarah Hopkins	Zoe Padfield
Seth Honnor	
Seve Moles	
Sharon Clark	
Sheila Frazer	
Sheilah Margaret	
Campbell	
Sheldon Frank Clifford	
Shiona Morton	



Penny Scott, Partner at Cartridges Law

Cartridges Law is very pleased and excited to announce its sponsorship of the summer pop-up season of the Boat Shed

This amazing new venture is proof that great things can grow from small beginnings; if there is enough energy, enthusiasm and vision.

The Bike Shed, which we have supported practically from the start, is the genesis of The Boat Shed. As The Bike Shed is to Exeter's arts scene, so Cartridges Law is to its legal community: we both punch above our weight.

We are solicitors in St Thomas, close to the river and The Boat Shed, and away from Southernhay and the motorway junctions where most Exeter solicitors seem to base themselves. We choose to work in our community, where we have a long-established network of connections.

Since 1973, we have provided legal services to St Thomas and the wider area. We have been very active, and always present, in our community. In 2016 we won the Devon and Somerset Law Society Award for Social and Corporate Responsibility – or in ordinary language, for our work with organisations like Exeter Pride, Exeter Dementia Alliance and Age UK Exeter; Exeter City FC running events, and the revival of the local traders' association. Plus, of course, our ongoing support for The Bike Shed Theatre, and now The Boat Shed.

We are, and always were, proud to be a Legal Aid practice; but changes to the scheme have made it available to fewer and fewer people. Because of this we try in various creative ways to keep our legal services accessible to everyone, for example working in partnership with Exeter University Law Department.

If you are paying privately for your legal advice we have a range of payment schemes which may help, and we always agree clear fees with you before we start work on your case. We do not deal in nasty surprises where your costs are concerned.

Whatever else we do in the community, and however much fun we have doing it, our core business is giving an excellent and thoroughly professional legal service. You will always find when you deal with our company that we are 'less formal, more approachable', and always working to deliver the best results for our clients.

Our staff are experts in their areas of the law, whether it is a family law matter; private client work, such as a new will; a personal accident claim; or a new property purchase. You can be sure of the quality service you will receive from Cartridges Law.

We wish everyone involved with this amazing project every success – the Boat Shed will be a fantastic resource for the people of Exeter.

Supported through Artists and The Crowd-match funding, from Arts Council Engand and Nesta

With thanks to our business sponsors Cartridges Law and Bishop Fleming



Supported using public funding by
**ARTS COUNCIL
ENGLAND**





Exeter Canal and Quay Trust

The Exeter Canal and Quay Trust welcomes the events the Boat Shed is planning for the summer as part of the Bike Shed’s ambitions to transform Maclaines Warehouse into a vibrant and innovative theatre and activity space.

Established over 30 years ago, the Trust has been active in preserving the land and buildings of the beautiful and historic Canal and Basin area. Gradually, over this period, it has overseen the transformation of the area into a vibrant shopping and leisure destination with much of the Quay successfully regenerated. It is a popular destination for both tourist and locals and is one of the most attractive areas of the city with a fascinating history, mix of historic and contemporary design, antique shops and, more recently, an increasing number of pubs and restaurants.

One of the Trust’s aims is the encouragement of healthy recreation and has been very pleased to see The Quay and Basin area become the home of a revitalised base for the Haven Banks Outdoor Education Centre as well as the use of the Old

Electricity Building by the Clip and Climb Indoor Climbing Centre, both of which add significantly to the water based and recreational activities already established in the area, attracting not only the participants themselves, but associated retail and commercial activity.

The Boat Shed events planned for the summer also tie in with a further Trust objective of supporting artistic and cultural activities. Over the years, the Basin area in particular has hosted small scale and major cultural events and the Trust welcomes the Bike Shed plans which follow this tradition.

The events are, of course, a precursor to the exciting plans for the Maclaines Building itself and it is very much hoped that this project can come to fruition to provide a vibrant and exciting addition to the recreational, sporting and artistic activities in this wonderful part of the city.

Theatre

Marco
Simon Jones in collaboration with Upstart
4 - 8 July, 7.30pm, 14 +, £8

In 1998, while Marco Pantani was winning the Tour de France, Simon was grazing his knee in a race with his brother on second-hand bikes. Six years later, Marco died. Disgraced in a doping scandal, he locked himself in a hotel room and killed himself with a massive overdose of cocaine.

Armed only with an inflated sense of his own ability and his junior cycling proficiency badge, Simon sets out to do justice to the epic story of his hero. Marco was an ordinary kid who became an icon. Yes, OK, he was also a cheat. But if you’d been programmed since childhood to win at all costs, wouldn’t you have done the same?

Marco is an explosively physical solo show about what it means - and what it takes - to succeed.

Twenty Something
Freya Bardell
5 - 6 July, 9pm, 16 +, £5

Your twenties are meant to be the best years of your life. Or so everybody keeps saying. But quite frankly, this isn’t what Freya had in mind. A comic look at a millennial trying to navigate her way to adulthood as best as she can.

The Beginner’s Guide to Navigation
Kill The Cat Theatre
6 -7 July, 6pm, £5

Is anyone listening to you? To be honest they’re probably not. But that’s okay. No one’s listening to Cat either. But that’s not going to stop her. She’s on a campaign. A campaign that’s going to make waves. A campaign that’s going to ruffle some feathers. A campaign against... maps. Why? Because maps lie. Geographers of the world beware.

Me & My Bee
ThisEgg
5, 7 July, 6pm, £5

Climate change is massive. Bees aren’t. ThisEgg, invites you to save the world - one bee at a time in this new comedy for children and adults alike. Plant the seed for change, join the bee party. Before it’s too late...

‘Dippy, eccentric, funny’
★ ★ ★ ★ THE STAGE

FESTIVAL TICKET OFFER - 5 FOR £20

Book 5 tickets for shows for just £20



MARCO

40KM Exeter
Hugh McCann
9 July, 7.30pm, £5

A live performance entirely generated from the field recordings and field notes gathered from a 40M walk through the surrounding space of the Boat Shed. Presented in total darkness, this live performance offers audiences a chance to reimagine and re-inhabit spaces which have become overly familiar so that we can consider new ways of interacting with the city.

Pub Talks Presents: A Pint Sized Conversation
Dylan Frankland
10- 11 July, 7.30pm, £5

There is going to be some stuff in here that is sad. And serious. There’s also some things that are really confusing, and messy, and painful. But don’t worry. We’ve got pork scratchings. We’re just here to talk.

We Are Ian
In Bed With My Brother
10 -12 July, 9pm, £8

1989. Manchester. A frenzy of drugs, beats and bucket hats. Illegal raves. Acid parties...

Just jumping up and down in a field and sticking up two fingers to Thatcher. Remember it? We don’t. We weren’t even born. But Ian was. And Ian does remember. We’ve got f*ck all now. So, we’re going back to 1989. We’re gonna get off our peanuts. We’re gonna bounce around like idiots. And Ian’s going to show us how. We’re mad fer it. And you will be too. Let’s party...

‘Be Ian, be you but really, just be in this audience.’
★ ★ ★ ★ ★ A YOUNGER THEATRE

Appily Ever After
Frenetic Fox Theatre
11 July, 6pm & 12 July, 7.30pm, 16+, £5

Can one gym selfie truly capture the inner workings of your soul? Serenading you with original song, spoken word and just the right amount of desperation, join Paul as he questions your relationship with technology - exploring app addiction, disillusionment and how far are we prepared to go to be fulfilled.



WE ARE IAN

Post
Xavier de Souza
13 July, 7.30pm & 13 July, 6pm, £8

This new show mixes theatre and interactive performance to invite you to join performance maker Xavier de Souza at the table, eat, drink, get merry, make new friends and explore what exactly makes a ‘nation’.

How To Drown A Fish
Grace Gibson
13 July, 7.30pm, 12+, £8

A devised solo performance that dissects the point of failure. Unpacking personal experiences, we watch a girl with a hairspray-fixed smile do her best to stay afloat.

Re: Production
White Slate Theatre
13 July 9pm, 14 July, 7.30pm, £5

A scientist, on the cusp of a new IVF discovery is faced with difficult decisions about her own fertility. An intimate new play exploring women’s choices.

THEATRE CONTINUES ON
PAGE 22

Theatre

And Here I Am
Oliver King
14 July, 6pm & 15 July, 7.30pm, £8

Based on Ahmed Tobasi’s personal coming of age story. Combining fact and fantasy, tragedy and comedy, spanning both the first Palestinian intifada and the second, we follow the protagonist through his transformation from armed resistance fighter to artist, his journey as a refugee in the West Bank to Norway and then back again.

All the Journeys I Never Took
Lucy English
15 July, 12 - 6pm, every 30 minutes, off site, 16+, £5

A personal account of what it’s like to discover our place in the world. A place which echoes with unravelling journeys, first dates, travel, break-ups, family and confidences. At turns both confessional and an exploration of current affairs, this show explores what a contemporary definition of home might be. This unique performance is for one or two audience members at a time.

Radio Head
Cally Hayes
16 July, 6pm, £5

Martin and Jude are a fun loving couple who greet their pregnancy with the usual mix of excitement, trepidation and social media sharing. But when the scan shows an abnormality, their world is knocked off its axis and they have some difficult decisions to make.

Sunked
Chris White
16 & 17 July, 7.30pm, 12 +, £5

Chris has never exactly had what you might call ambition. One day he realises that the Titanic is still at the bottom of the sea, and sets out on a fervent quest to haul it up – to reclaim it from the hands of Canadian billionaires and give it back to the people who deserve it most.

Combing comedy, poetry and story-telling, *Sunked* is a one-man spoken word show about salvage, salvation and Celine Dion.

Mafia?
Sleeping Trees
18 July, 6pm, £8

Comedy trio Sleeping Trees deliver their version of every gangster film they’ve ever seen. Expect casinos, operas and bloodshed as the Banucci brothers find themselves in a situation stickier than most luxury cakes.

‘A company set to rocket to stardom’ ★ ★ ★ ★
THREE WEEKS

Western?
Sleeping Trees
18 July, 7.30pm, £8

Sleeping Trees find themselves slowly crisping under the sun of the Wild West. With a live score, Sleeping Trees stamp their fast, physical and surreal brand of comedy onto one of the most revered film genres of all time.

Wanna Dance With Somebody! Or, A Guide to Managing Social Anxiety Using Theoretical Physics
Running Dog Theatre
19 & 20 July, 6pm, £5

A new show about social anxiety, about coping mechanisms- about big ideas and how they impact on small things. About taking chances. And about dancing.

‘Strangers were united in their love of music and dance, releasing inhibitions. It was a fantastic feeling.’
EXETER EXPRESS & ECHO

Sci Fi?
Sleeping Trees
19 July, 7.30pm, £8

Accompanied by an inter-cosmic and highly sensual musical score, the Sleeping Trees invite you to join them on a journey into the deep and infinite unknown. So strap on your helmets, jump into your spacesuits, complete the necessary six years of training required by NASA to fly into space and THEN, grab yourself a ticket!

‘A blockbuster hour of cleverly scripted fast laughs and energetic comedy’. ★ ★ ★ ★ THE LIST

The Trail of the Kings
Sleeping Trees
The Trail of the Kings
20 July, 7.30pm, £8

Multi-award winning comedy trio Sleeping Trees deliver their medieval fantasy rom-com. Bring tissues.

‘The love child of Monty Python and the League of Gentlemen’ ★ ★ ★ ★ TIME OUT

Monster
Worklight Theatre
20 July, 7.30pm, £5

A thrilling new play about masculinity and violence, from internationally acclaimed Worklight Theatre who won a Fringe First for their previous production, *Labels*.



Monster

Chopping Chillies
Words and Prose Productions
21 July, 6pm, £5

A cobbler and a cook concoct a delicious transcontinental enchantment as tragedy and chance entwine. Katie dreams of curries and chapattis; Ajna, of holy souls and reincarnation. A delightful, poetic, magical yarn that conjoins the spirit of India with the heart of London.

The Drive
Angel Exit Theatre
21 July, 7.30pm, 12+, £5

Spliced through with humour, slick physicality, an original contemporary soundtrack and video projection, The Drive is a show about friendship, grief, the fragility of memory, turning 40 and coming of age in the 1990s.

The Conductor
The Conductor Company
22 & 23 July, 6pm, 16+, £5

In 1941, troops surround the city of Leningrad, in what will come to be known as the Leningrad Blockade, a siege of more than 2 years, and one that will claim more than 1,000,000 lives. In the midst of this devastation, composer Dmitri Shostakovich works tirelessly to complete his 7th Symphony, a symphony for the people. This is a true tale of the dignity of survival.

The Foley Explosion
Julie Rose Bower
22 July, 7.30pm & 23 July, 9pm, £5

Set between Britain and Russia this innovative and playful performance creates uncanny effects out of original sound effects. The layers of sound invoke the cinematic language of Foley where origins and destinations of sound are often wildly different and shift their meaning depending on what images they are paired with. The show explodes perceptions of reality and explores how we construct who we are and how we think about the world around us.

Welcome to Paradise
A Ship of Fools Theatre Company
22 July, 9pm & 23 July, 7.30pm, £8

Strap in for the Captain and Raoul’s playfully anarchic rollercoaster to the darkest corners of the grotto where the mould festers under the tree. Expect danger, hilarity and horror as Ship of Fools tap-dance lightly back and forth over the lines of decency for your amusement and enjoyment.

Michael Morpurgo’s Out of the Ashes
City of Light Theatre
24- 25 July, 6pm, £5

Becky Morely begins her diary on New Years Day 2001, little does she realise just how much that year would change her life. Based on the novel by award-winning writer Michael Morpurgo, *Out of the Ashes* is the story of Becky’s experience on her family farm in Devon, during the outbreak of foot and mouth disease across the UK.

‘Charming and inventive, the piece uses simple staging and storytelling to shed light on a monumental crisis in recent history.’ EXEUNT

Happiness is a Cup of Tea
Annie McKenzie
24 July, 7.30pm & 25 July, 9pm, £8

During a stormy night on the clifftop at Beachyhead, Fiona Nash is facing her own mortality. She should probably go home, but sometimes it’s best just to have a cup of tea and a sit down for a minute. Story-telling, puppetry and grief collide in this show about family, being the youngest and losing the ones we love.

‘A little gem not to be missed’
★ ★ ★ ★ BROADWAY BABY

ASWIP (a serious work in progress)
In Bed With My Brother
26 July, 6pm, FREE

A new work in progress from the company that bought you the award-wining *We are Ian*. It’s going to be a surprise. It’s going to be political.



Jayde Adams

Stand-up Comedy

Spencer Jones: The Audition
Work In progress
27 June, 9pm, £6

As seen on *Live At The Apollo* (BBC Two), *Sky’s Spencer Jones’ Christmas*, Spencer Jones brings us a new show. It’s a work in progress but he promises there will be a story, there will be comedy and he is 88% sure he won’t disappear up his own arse.

‘No other Fringe show will put a bigger smile on your face’ ★ ★ ★ ★
EVENING STANDARD (on Egg y Bagel)

Jayde Adams is Jayded
Work In Progress
28 June, 9pm, £5

When Dawn French said ‘Jayde Adams is the 3rd funniest woman in the world.’, she was probably right. Winner of the prestigious Funny Women Award she’s received multiple 5 star reviews and been lauded as ‘Britain’ funniest woman comic’ by The Daily Mail and a ‘fearless force of nature’ in The Independent. Be the first to see her new show before it smashes the Edinburgh Fringe later this year.

Lloyd Griffith: in:Undated
Work in Progress
29 June, 9pm, £5

Fresh from supporting Jack Whitehall and Rob Beckett on tour, Lloyd embarks on his first nationwide tour in:Undated. A show about overcoming the overwhelming. Star of BBC’s *Taxi To Training*, *Drunk History* (Comedy Central), SoccerAM (Sky Sports 1) and *The Premier League Show* (BBC 2).

‘Punchy gags and jaw-dropping voice’
THE EVENING STANDARD

John Kearns
Work In Progress
30 June, 9pm, £5

The absurdist stand up comic and first ever winner of the Edinburgh Foster’s Best Newcomer and Best Show Awards previews his latest work in progress.

‘Heading for the comedy stratosphere... you’re in the hands of a master’ THE GUARDIAN.

Bethany Black:
Work In Progress
14 July. 9pm. £5

The world is a terrifying place right now, the rise of the right, Brexit, the loss of freedoms, it’s hard not to be political. Bethany Black however, is giving it a good go. Barring a full on war, this will be an hour of daft stories and ideas to help lift the gloom of a scary world.

‘Bethany Black should prepare for world domination’ BRITISH COMEDY AWARDS

Brendon Burns and Craig Quartermaine in Race Off
18 July. 9pm. £5

‘Race Off is a once in a lifetime show that, if you miss, you may never forgive yourself.’
★ ★ ★ ★ THE AUSTRALIA TIMES

No-filter white Aussie Brendon Burns is teaming up with charming ball of rage Craig Quartermaine to form the first white and Aboriginal Australian double act in history... that’s right: in history... ever.

Brennan Reece: Everlong
Work In Progress
20 July, 9pm, £5

Nominated for Best Newcomer in Edinburgh and Best Show over in Australia, Brennan thought he’d do another show. How hard can it be? Probably, very. Come and watch him try not to be shit

Bishop Fleming Exeter accountants proud to support The Boat Shed

Exeter-based Top 40 accounting firm Bishop Fleming, a Sunday Times top 100 company, is helping businesses large and small in the city to grow and prosper.

The Firm is a proud supporter of the Boat Shed, as part of Exeter's vibrant arts and culture community.

Bishop Fleming will be celebrating its 100-year anniversary in 2019 and takes pride in the help it provides to the city's entrepreneurs and innovative ventures, through essential and timely professional advice and guidance on such matters as tax, accounting and other financial issues.

Many city-based businesses who ask Bishop Fleming for advice are successfully proceeding along a path of growth and profitability, attracting inward investment into Exeter to boost the local economy.

Bishop Fleming also takes pride in supporting the local Young Enterprise project, an educational charity that sponsors young people in the city to set up and run a company. The firm's staff and partners provide mentoring to young students on a voluntary basis to coach budding entrepreneurs to design and make their own products, and learn how to run a business.

Bishop Fleming shares the Boat Shed's vision to support the development of the local community, and to promote Exeter as an exciting and forward-looking 21st Century hub of innovation and creativity.

Friends and Neighbours

We're very proud to sit alongside some wonderful neighbours on Exeter's Canal Basin. With a range of outdoor activities and excellent food and drink options, there's plenty to help you while away the hours in the sunshine months.

AW Watersports

For all your paddling needs come to AS Watersports where their friendly staff and extensive selection of kayaks, canoes, and all sorts of watersports equipment caters to all needs from the beginner to the expert.

Exeter Cookery School

Come and learn to cook the food of your dreams in the school's converted 1830s warehouse on Exeter's historic quayside. With a range of cookery courses and cooking classes available, they've got a class to suit every skill level at our Devon based cookery school.

Haven Banks

Haven Banks Outdoor Education Centre is the South West's premiere Outdoor Education & Training facility. The centre offers unrivalled purpose built outdoor activity and training in one of the most picturesque areas of Devon's County City.

Jolly Roger

This quirky cafe offers a vast selection of teas on offer as well as delicious food.

Lutzy's

Lutzy's Coffee Shop on Exeter Quay is the place to visit for mouth-watering, homemade cakes and pastries, Portuguese custard tarts, continental cheese and meat platters, lovely paninis and sandwiches, delicious coffees and refreshing shakes.

A Salon Called Hare

At a salon called hare we wanted to create a home from home environment for our clients, a calm space situated on the quay in Exeter, where you can sip our delicious coffee and watch the world go by, whilst in the hands of our professionals.

Family Theatre

Fox and Rabbit's Idiot's Guide to The Owl and The Pussycat
The MakeShift Ensemble
23 July, 2pm, age 4+, £5

Join the wayward Reynard. H. Fox and his reluctant sidekick Rabbit as they meander their inelegant way around the world of the Owl and the Pussycat in their beautiful pea-green boat.

The MakeShift Ensemble bring a sense of adventure and humour to this wonderful retelling of Edward Lear's classic nonsense poem, brought to life with puppetry and live music. Bring your imaginations and be entertained whatever your age.

Shipwreck Sam
Boo to a Goose Theatre
27 July, 2pm, age 4 - 10 years, £5

A tidal wave of imagination is coming this way; it will sweep up an audience of children and land them on far away Dead Ghost Island. There, together with their new friends Shipwreck Sam and Bonnie Betty, they join in a quest for pirate treasure ... But will the terrible-naughty-bad pirate, Big Bill Bucketbelly, get there first?

In this fun and exciting show for families with children aged 4-10 years, the children become the crew of Sam's ship and participate in the story. With games, singing and dancing it is guaranteed to keep everyone captivated.

Alf The Highway Man
Brave Bold Drama
28 July, 2pm, £5, age 4+

Alf has an eye for other people's possessions. He snatches and grabs without a thought for other people's feelings. But it's time for him to change tack and learn that there are better ways to play! Full of imaginative play and original songs 'Alf the Highwayman' is a show for all the family with plenty of chances to join in and no frights!

Flossy and Boo's Fantastical Mystical Wonderful Fantabulous Tremendous Stupendous Curiosity Shop
29 July, 2pm, age 4+ £5

Flossy and Boo have run away from the circus to set up their own travelling curiosity shop - collecting songs, trinkets and stories of rather strange characters along the way.

Flossy and Boo's Curiosity Shop is an interactive show for all the family, filled with songs, stories, music and bizarre characters.

FESTIVAL TICKET OFFER - 5 FOR £20

Book 5 tickets for shows for just £20



The North, The North

Theatre

Cow Making Room
26 July, 7.30pm & 27 July, 9pm, 14+, £8

Mum's gone, cancer. Brush it under the rug. And Dad's been quietly losing it since. Bethan's come down to Yeoford with a cow. There wasn't another option. This is a casual rural situation - she's a farmer's daughter looking to acquire a tractor. It's quite urgent actually...

A tragicomedy with music set in rural Devon about a girl, a cow and the ways we ask for help.

The North! The North!
Christopher Harrison
27 July, 6pm + 28 July, 7.30pm, 14+, £8

A dark contemporary myth about England featuring highly physical storytelling and animation.

It begins with a phone call and some shocking news. A young man, seeking vengeance for the wrongs of the past, begins a quest that will lead him on an extraordinary, surreal journey back to where it all began: the dark and bloody heart of the North. The monsters lurk and a reckoning waits.

To The Waters and The Wild (work in progress)
Josh Lucas
28 July, 6pm, £5

A new music theatre show about going home, climate change, and hope in the face of helplessness.

Set in a near future where the effects of climate change have reshape the geographic and political landscape it tells the story of a young woman returning to her small home town to find it the same as it has always been, and ultimately changed forever.

The Silence of the Nans
Jessica Fostekew:
28 July, 9pm, 16+, £5

(Read in film-trailer voice): Last summer Jessica did two reasonably significant things. One, a story of pure joy. The other, a tale of entrapment, torture, shame, and ice-cream. This show tells the second story. The horrid one.

(Normal voice): Jessica regularly hosts BBCR4 Extra's 'Comedy Club' and 'BBC Radio Comedy Awards' (Radio2, R4Extra). Jess co-hosts the massive hit podcast 'The Guilty Feminist'.

The Peace
Written by Natalie McGrath, a script-in-hand reading.
29 July, 6pm, £5

It's 1998 and New Labour are in power. They've kicked off their heels and peace in Northern Ireland is a priority. The final negotiations for the Good Friday Agreement are coming to a close. In the middle of it all is Mo.

"I sparkle, they frown. I jest, they jostle. This is the way it goes."

Little Moments
Frank Thomas
29 July, 7.30pm, £5

Frank is a Welsh spoken word artist, David is a Scottish Multi Instrumentalist and by the power of Greyskull they are ... Frank and Dave! A spoken word music making duo who use David's violin and loop pedals to create soundscapes to Frank's stories about life, love and superpowers!

When The Going Gets Duff
Helen Duff
29 July, 9pm, £5

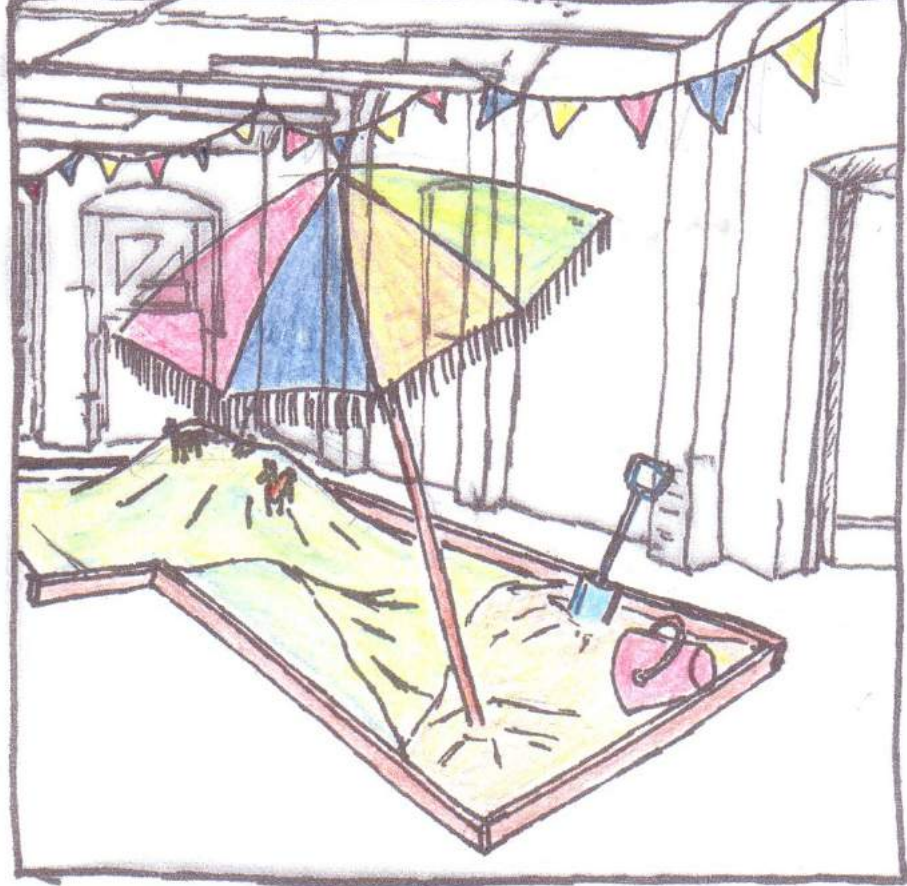
Helen Duff presents a subversive and very funny show about life as a fully exposed idiot.

Trigger warning: doughnuts may be shared in an effort to illustrate why basic demand and supply economics needs a tantric overhaul.

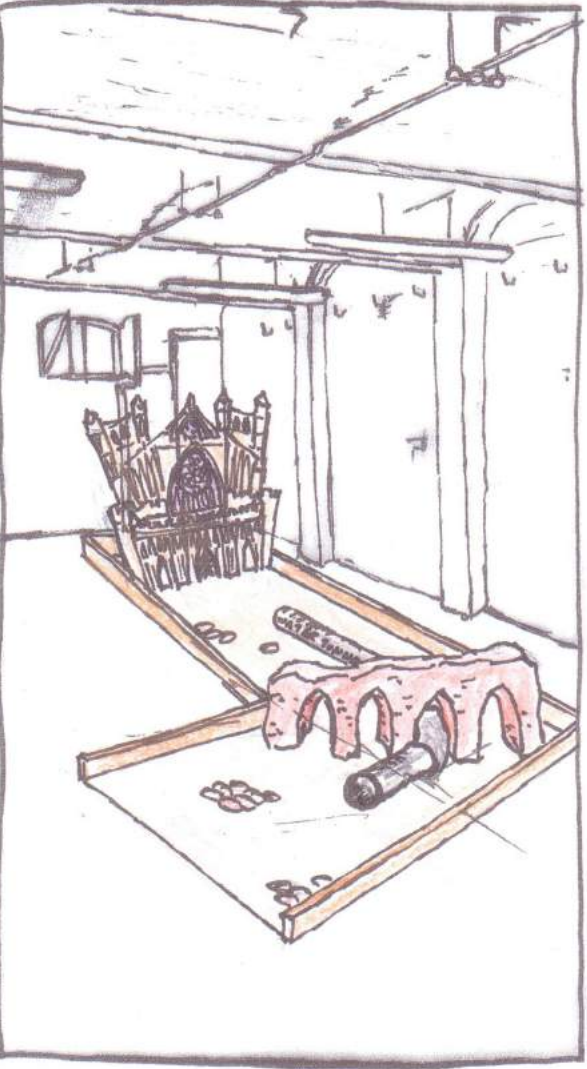
'Absolutely shameless, boldly ridiculous, embarrassingly funny'
★ ★ ★ ★ ★ AUSTRALIA TIMES

'Quick witted and supremely empowered ... a formidable comic'
★ ★ ★ ★ ★ THE SCOTSMAN

FROM MAGNIFICENT MOORS TO BEAUTIFUL BEACH



EXETER'S HISTORY



Mini Golf

From 2 August

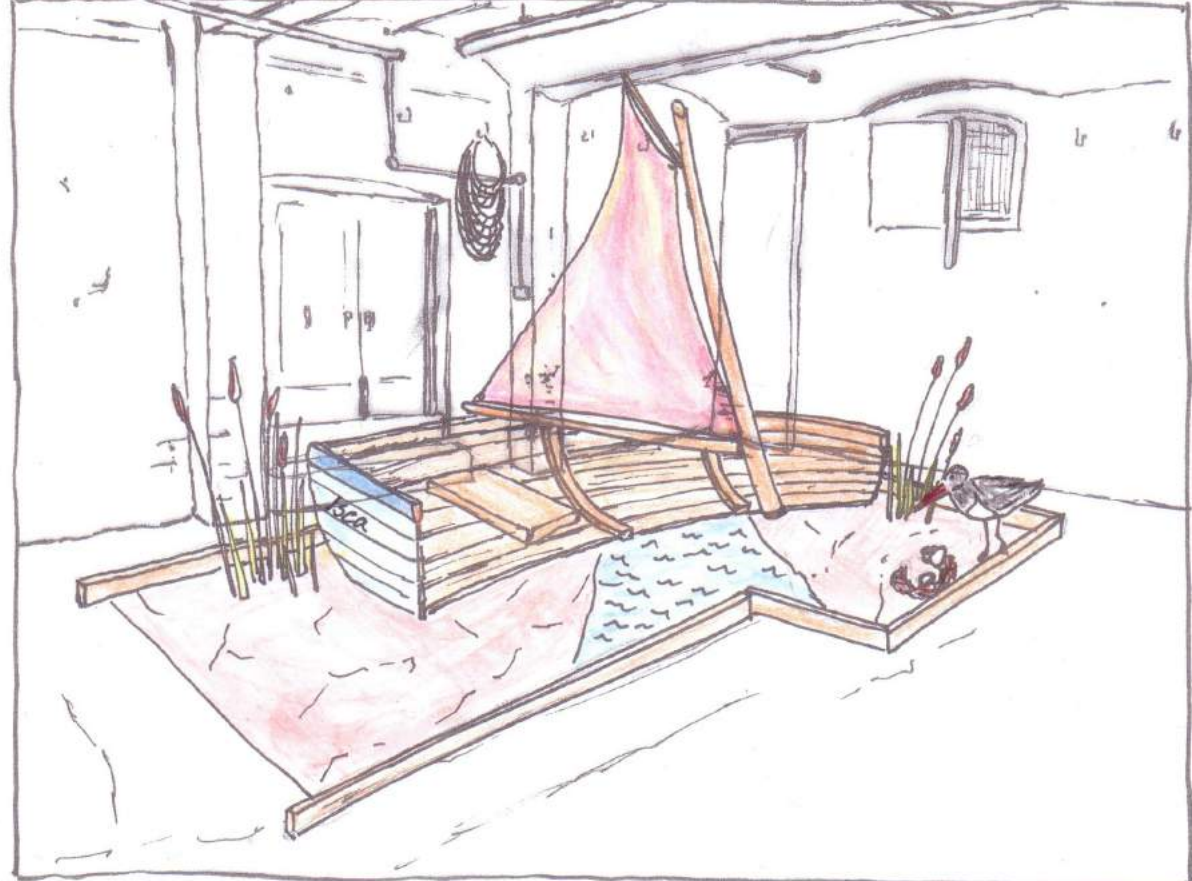
We've teamed up with the good people at Active Devon to enable the creation of the best mini-golf course this side of Marsh Barton.

With nine holes to complete, you'll be challenged by Exeter's ancient Roman Wall, you'll navigate the city's second world war craters, skirt around the sleepers of our first railway line and dodge the witches and muggles that lurk in our alleys.

The course will be open from 9am - 10pm and you can bring your drinks in.

Designed by Fiona Russell:
fi-russell-theatre-design.co.uk

THE RIVER EXE



BY: FI. RUSSELL

Theatre



The
Bike
Shed
Theatre

Bar



Dancefloor



The Bike Shed Theatre is open all year round, providing a unique venue for new theatre, moderate drinking and reckless dancing

COMING SOON

Little Soldier and The Bike Shed Theatre presents

JOURNEY TO THE IMPOSSIBLE

A Christmas coming of age quest at The Bike Shed Theatre
6 Dec 2017 - 6 Jan 2018

early bird offer
Book before 2 September and get tickets to any performance for just £6.

Ticket £12 (£10)

WE NEED YOU!

This pop up is just the start of the bigger Boat Shed project. The Boat Shed will only be fully realised if we gather enough support and cash. If you like what we're trying to do and want to help build the Boat Shed, now's the time to get involved. Here's how:

Share Your ideas

We'd love to hear your thoughts. Tell us what you like, tell us what you don't. If you have an idea about how we could use the space, do get in touch by emailing davidlockwood@bikeshedtheatre.co.uk.

Tell your friends

instagram: **boatshedexeter**

twitter: **@ExeterBoatShed**

facebook **@BoatShedExeter**

www.bikeshedtheatre.co.uk/the-boat-shed

Give some cash

We can't shy away from it - we need cash. If you're able to give a little or even a lot, here's how you do it:

Via our website
www.bikeshedtheatre.co.uk/support-us/donate

In person at the Boat Shed.

If you'd like to talk directly to us about other ways to make a donation, please talk to kelly
kelly@bikeshedtheatre.co.uk

Sponsorship

If you work for a business that you think would like to be associated with the Boat Shed, let's talk. We can offer a range of benefits from branding to delivery of a unique event. Get in touch with kelly@bikeshedtheatre.co.uk.

The
Boat Shed
— a pop-up —